

This edition of SCIELine gives updated advice for the COVID-19 pandemic and safeguarding. There's updated guidance on infection control as well as supporting adults with autism or learning disabilities. Plus an opportunity to register for our webinar series.



New: Safeguarding children and families during the COVID-19 crisis

This new resource gives useful guidance for practitioners working to safeguard children and families during the COVID-19 outbreak, including social workers and those working in social care settings.

Learn more: Safeguarding children and families during the COVID-19 crisis

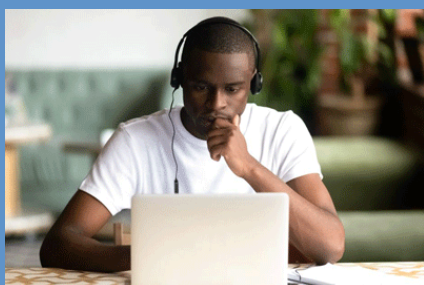
SCIE hub: Safeguarding and COVID-19



New: Domestic violence and abuse - Safeguarding during the COVID-19 crisis

Emerging evidence has emphasised the increased risks of domestic abuse during the COVID-19 pandemic. This new resource aims to help professionals and organisations better support and safeguard adults and children at risk of abuse.

Learn more: Domestic abuse and safeguarding



Upcoming: Safeguarding adults training webinar series

SCIE have developed a series of webinars to support you and your team to keep vulnerable adults safe in a variety of settings.

Each week we explore specific aspects of the safeguarding process. Attend sessions to refresh your learning or sign up to all six for a complete overview of safeguarding adults.

Learn more and register: Safeguarding adults training webinar series

You can also view the [SCIE quick guide to Safeguarding adults during the COVID-19 crisis](#).

Coronavirus and the Social Care Institute for Excellence (SCIE)

We're making sure that all preparations are in place to provide the same high-quality service that you expect from us. We kindly ask that for any training or consultancy enquiries, these are sent through [our dedicated enquiry page on our website](#), as opposed to our phone lines.

At an uncertain time for the sector, we are still doing our utmost to continue to offer evidence-based solutions and share good practice related to the Coronavirus outbreak for all those working in social care. Visit our updated Coronavirus (COVID-19) hub for the latest social care guidance.

[View the Coronavirus guidance](#)



Updated: Coronavirus (COVID-19) infection control for care providers

Managing infection control is essential to prevent the spread of coronavirus (COVID-19) for any care setting or service. This newly updated briefing sets out best practice for care providers to remain safe and prevent COVID-19 from spreading.

[Learn more: Infection control for care providers](#)



Updated: COVID-19 guide for social workers and occupational therapists supporting adults with learning disabilities or autistic adults

This updated guide aims to help social workers and occupational therapists better support autistic adults and adults with learning disabilities through the COVID-19 crisis.

[Read: Supporting adults with learning disabilities or autistic adults](#)



Upcoming webinar: COVID-19 and care providers - Tuesday 28 April

Care Providers, such as residential care homes, nursing homes and home care providers, are at the epicentre of the COVID-19 pandemic. This webinar, the third in [our series covering Coronavirus guidance](#), will cover the impact of the crisis on care homes and how we mitigate that impact.

Register for the webinar: COVID-19 and care providers - 28 April at 12:00pm



CPD-accredited e-learning on the Mental Capacity Act - start studying from home

This CPD-accredited online course explores the Mental Capacity Act 2005, including best interests decision-making, and how to support people to make their own decisions.

Learn more and enrol: MCA e-learning



End-of-life care and dementia: Carers' needs

This section of our dementia guidance provides advice about supporting the person living with dementia and their carers.

Read: Dementia end-of-life care - supporting carers

Thanks for reading this edition of SCIELine, Dr Stella - we hope you enjoyed it.

We personalise SCIELine content and other emails that we send to you, so that you get the social care updates you are interested in. [Update your MySCIE account and select the topics that you want to hear about.](#) [Sign up for future editions of SCIELine here.](#)

